



Patient Profile + Treatment Outcomes 2023 Edition

Adolescents Ages 10–18



redcliffascent.com

Teenage boys & girls
ages 13 - 17

RedCliff Ascent is a short-term wilderness therapy program that provides support to teenagers facing significant emotional and behavioral challenges, such as depression, anxiety, trauma, tech addictions, ADHD, and other conditions. The program typically lasts 8 to 12 weeks, and its high impact and effectiveness make it a popular first step to longer-term therapeutic treatment.



DISCOVERY
RANCH

discoveryranch.net

Pre-teen boys 10-13
Teenage boys
ages 13 -17

Discovery Ranch is a therapeutic school and residential treatment center designed for teenage boys who are facing significant emotional and behavioral challenges such as depression, anxious attachment issues, ASD, ADHD, and more. The program typically lasts 8 to 12 months, providing ample time for long-lasting change and growth.



OXBOW
ACADEMY

oxbowacademy.net

Pre-teen boys 10-13
Teenage boys
ages 13 -17

Oxbow Academy is a residential treatment center and therapeutic school that specializes in helping teenage boys with sexual behavioral problems and other compulsive behavior issues. They offer a 90-day comprehensive psychological evaluation to determine if the student needs long term sex-specific treatment, which they can further provide with an average length of stay of 11-13 months, providing a specialized and supportive environment for young men to develop healthy habits and overcome their challenges.



DISCOVERY RANCH
SOUTH

discoveryranchsouth.com

Adolescent girls & teens assigned
female at birth ages 13 -17

Discovery Ranch South is a residential treatment center and therapeutic school that specializes in supporting teenage girls and teens assigned female at birth who are struggling with severe emotional and behavioral issues such as depression, anxiety, trauma, school anxiety, ASD, ADHD, and more. With an average length of stay of 8 to 12 months, the program provides a nurturing and empowering environment for students to heal, learn, and grow.



oasisascent.com

Teenage boys & girls
ages 13 - 17

At OASIS Ascent, we are committed to providing compassionate and holistic care for teens and their families as they face challenges like anxiety, depression, ADHD, trauma, suicidal ideations, and out-of-control behaviors. As a short-term (60-90 day) residential treatment center, we offer comprehensive mental health services, focusing on Observation and Assessment, Stabilization, and Intensive Therapeutic Support. Our holistic approach ensures that our assessments and personalized interventions are carefully designed to help teens heal and thrive, empowering them towards a brighter future.



waypointacademy.com

Teenage boys
ages 13 - 17

WayPoint Academy is a residential treatment center and therapeutic school that specializes in supporting teens struggling with all forms of anxiety, including GAD, OCD, social anxiety, panic disorders, school anxiety, ASD & anxiety, ADHD & anxiety, and agoraphobia. With an average length of stay of 11 to 13 months, the program provides a nurturing environment for young people to develop the skills, tools, and self-awareness needed to manage their anxiety and thrive.



threepeakstreatment.com

Teenage boys & girls
ages 13 - 17

Immersed in a serene natural setting, ThreePeaks Ascent is a short-term residential treatment center, where teens can disconnect from the noise and distractions of urban living, and instead focus on self-exploration, personal growth, and building a brighter future. Our specialized program is tailored for teenagers struggling with technology addictions, ADHD, trauma, depression, anxiety, social anxiety, panic disorders, and more. Through a holistic approach, we provide comprehensive mental health assessment and stabilization, engaging therapeutic interventions, and empowering skills training, all within a supportive and nurturing environment.

Overview Of Ascent Programs

Outcomes and Key Findings

Over **10,400**
Families Served

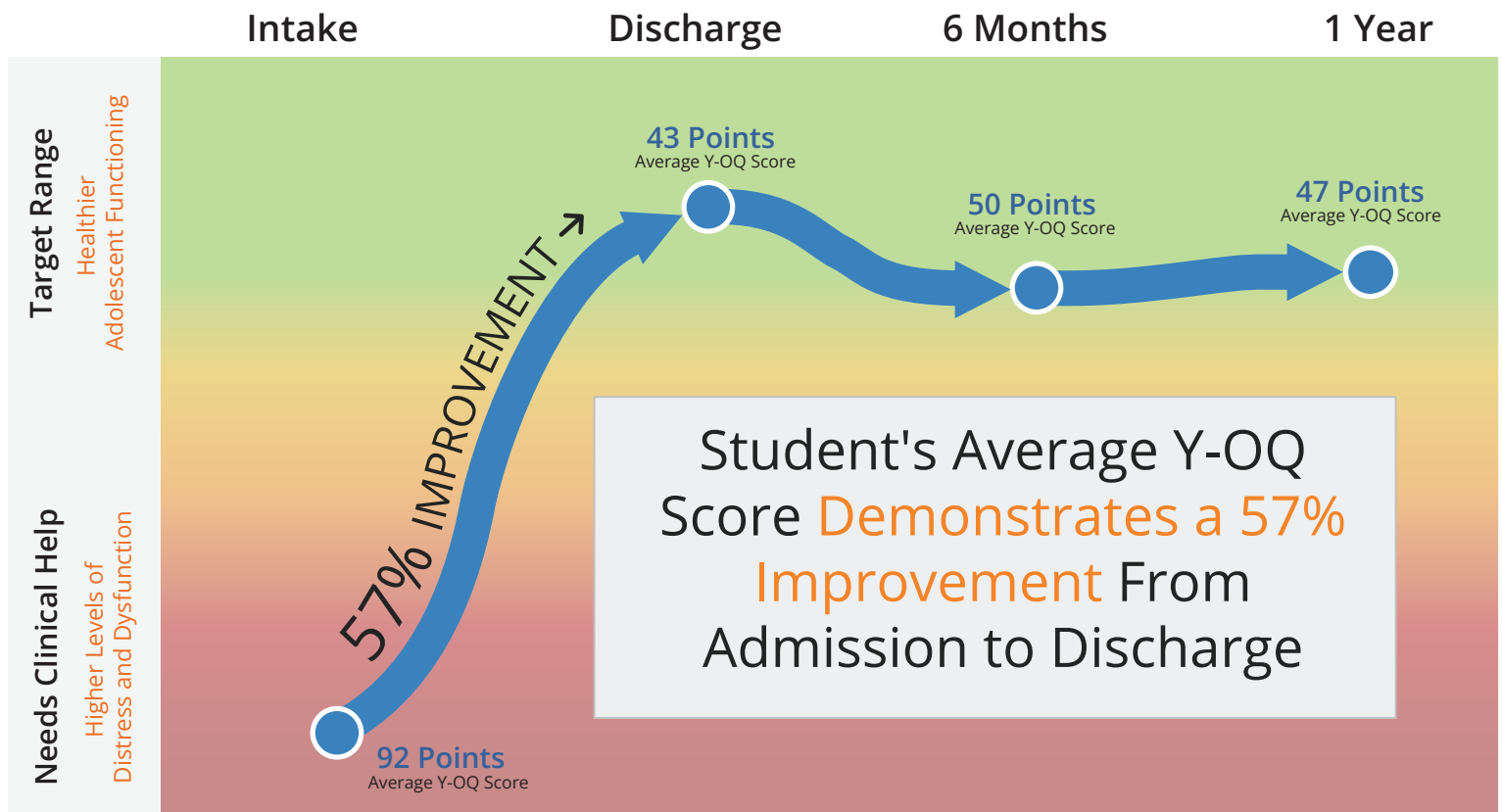
30+ Years
in Business

We Have Helped Families In
28 Countries
&
48 States

Measurement of Overall Improvement

Youth Outcome Questionnaire (Y-OQ)

The Youth Outcome Questionnaire (Y-OQ) is a tool developed to measure adolescent functioning. The Y-OQ has been validated and normed and is considered useful in measuring the progress of teens who may require outpatient or inpatient treatment.



49

Point Improvement
and Maintained That Score
One Year Later

Ascent Programs Surpasses Clinical
Standard - A 13 Point Change Is
Considered Clinically Significant

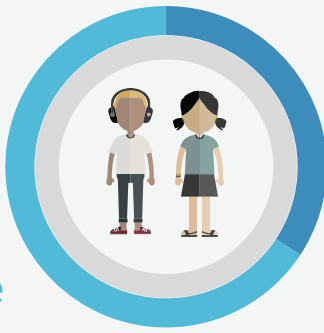


Ascent Behavioral Health - Family of Programs

Student Profile

GENDER

66% Male



34% Female

AGE



29%
Age 12-14

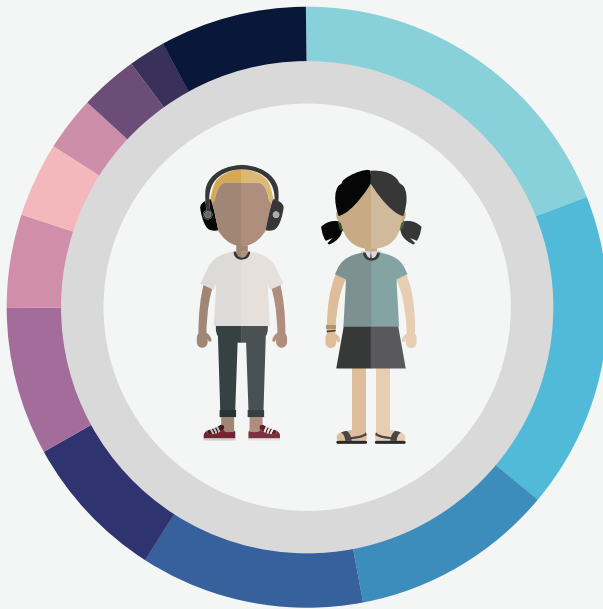
25%
Age 15

26%
Age 16

20%
Age 17

Student Diagnoses + Symptoms

Students At Ascent Programs Struggle With The Following Issues



19% - Depressive Mood Disorder

17% - Anxiety Disorder

11% - ADHD

12% - Behavioral Disorder

8% - Substance Use Disorder

8% - Parent-Child Relationship Problem

5% - Trauma/Stress Disorder

4% - Learning and Developmental

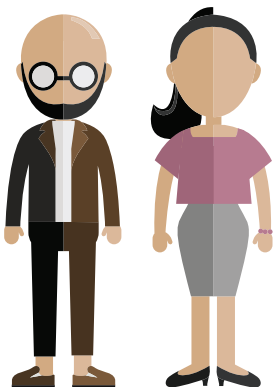
3% - Autism Spectrum Disorder

3% - Impulse Control Disorder

2% - Attachment Disorder

8% - Other

Hear from the parents who have been in our programs!



93%

At discharge, 93% of parents reported they would recommend this program to a friend if he or she had a child needing this level of treatment

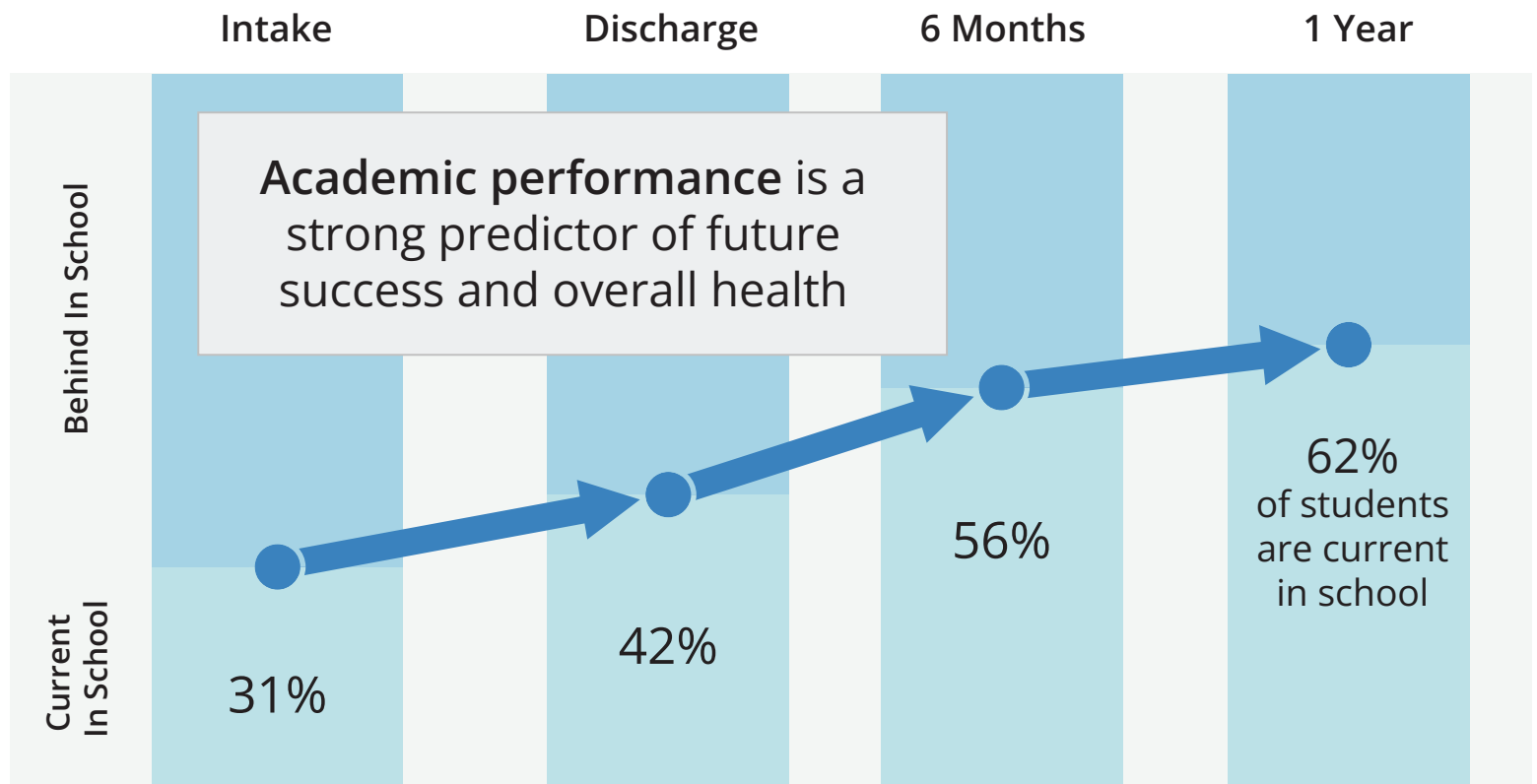
The research methodology includes the administration of an automated survey to all parents at predetermined intervals during treatment for data gathering purposes.



Ascent Behavioral Health - Family of Programs

Our Academic Outcomes

Superior Student Performance



97%
Increase

In students getting caught up and staying engaged in school even after a year

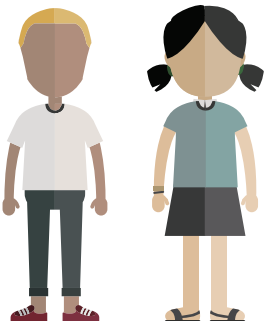
2.29
AVERAGE GPA
At Intake



3.06
AVERAGE GPA
At Discharge

Ascent Programs graduates achieve an average GPA increase from 2.3 at admission to 3.0 at discharge, an increase that is sustained even after a year

Hear **from the students** who have been in our programs!



94%

At discharge, 94% of **students felt like their therapeutic needs were addressed**

The research methodology includes the administration of an automated survey to all students at predetermined intervals during treatment for data gathering purposes.



Ascent Behavioral Health - Family of Programs